

USB 3.0 Duplicator and Sanitizer 1 to 15 (UB3916-G3)





Rating: Not Rated Yet

[Ask a question about this product](#)

Main Features

- Standalone design without requiring PC for operation.
- Peak transfer speeds up to 16GB/min.
- Compatible with variety of USB 2.0/3.0/3.1/3.2 devices and external USB Hard Disks.
- Data Sanitization: Quick Erase, Full Erase, and DoD Erase.
- Can handle the largest USB capacity available on the market.
- Handles USB-HDD with a capacity over 3TB.
- Mass produce whole USB write protect USB.
- Integrates log report management system for records purpose.



- [Product Description](#)
- [Features](#)
- [Specification](#)
- [Comparison Chart](#)
- [Video](#)

Product Description

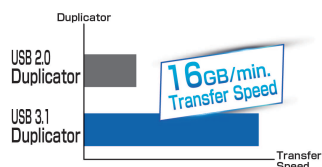
In the era of audio and video files getting larger, people switch pen drives from USB2.0 to USB3.0 or 3.2, the storage capacity getting bigger and bigger as well. U-Reach IntelligentU3 series duplicator is specially designed for handling USB3.0 or UB3.2 devices. It's an non-PC based, standalone machine, designed by real USB3.2 signal. The transfer speed for real test can reach up to 16GB per minutes.

In addition, it contains media check functions: H2test and H5test which helps users easily kickout the bad quality/ bad signal/ slow speed devices. To use with Log Manager function, IntelligentU3 series duplicator makes your production fast, efficienct and reliable.

Features

- **Impeccable Transmission Speed**

Highest speed USB Duplication /Inspection Equipment in the industry. Maximum copying speed of one single port can be up to **16.0GB/min.**



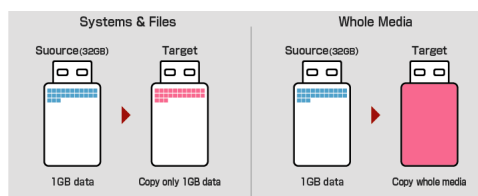
• Intelligent Copy Option

• Systems and Files (Quick Copy Mode)

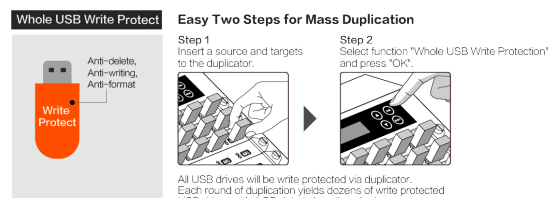
1. The duplicator automatically copies only the data area, rather than the empty spaces within the capacity, which reduces the duration of the copy process.
2. This copy mode supports the file formats such as Windows (FAT16/32/64/NTFS), Linux (ext2/ext3/ext4), and Mac (HFS/HFS+/HFSX). If the file system format to be copied is not among the supported formats above, then system will automatically switch to "whole media copy" mode.

• Whole Media

1. The duplicator copies from the initial sector to the end, bit-by-bit.
2. There are no format limitation in this mode.

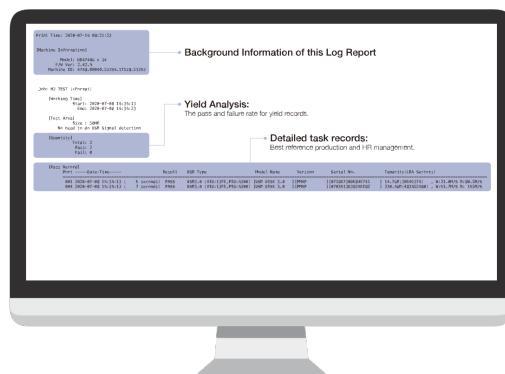


• Mass Duplication W-Mode Write Protect USB.



• Event Log Report

U-Reach U3 Series USB3.1 duplicators has an unique mechanism to prevent alteration of its Event Log Report. It records the operation results and other information of each devices completely. It is an important asset for production management and analysis.



• Optional Item / Accessory – HDD/SSD Module Cooler

High speed transmission may cause storage media to generate heat during the process of duplication. It's advised to use cooling brackets for those storage media to stabilize the copy performance.



▲ Cooling brackets for external HDD/SSD

• Easy Maintenance

With a specially redesigned and improved structure, users can easily change the sockets in 3 simple steps, which takes roughly 1 minute.



Specification

| | | | | |
|-------------|----------------------|---------------|----------|---|
| | | | |  |
| | | Model | | UB3916-G3 |
| | | Target | | 1:15 |
| | | Speed | | 16.0 GB/min (260 MB/sec) |
| | | Operation | | Stand-alone |
| | | Support media | | USB 2.0, USB 3.0 / USB 3.1 / USB 3.2 |
| | | LED | | LED (Green/Red) on each slot |
| | | Power Supply | | 12V adaptor |
| | | Button | | 4 buttons |
| Humidity | | Operating | 20%~80% | |
| | | Storage | 5%~95% | |
| Temperature | | Operating | 0?~75? | |
| | | Storage | -20?~85? | |
| | System Dimension(cm) | | 30*18*17 | |
| | Carton Dimension(cm) | | 40*33*29 | |

Comparison Chart



USB 3.0 Duplicator
Comparison Chart



| Series | Intelligent U3 | | Super7-U3 |
|------------------|------------------------------------|-----------|-----------------------------|
| Version | S | G | |
| Model Name | UB39XX-S3 | UB39XX-G3 | UB37XXT |
| Speed | 16GB/min | | 12 GB/min |
| Targets | From 7 to 47 | | From 6 to 41 |
| Copy+Compare | V | V | V |
| Media Check | V | V | |
| Format | V | V | V |
| Erase | V | V | V |
| PC-Monitoring | V | V | |
| Event Log | | V | |
| Swappable Socket | V | | |
| Power Supply | Power Adapter* | | Universal Power Supply Unit |
| Write-Protect | V (Requires W-Mode USB pen drives) | | |

*Additional Power Adapter is required for handling USB-HDDs.

The Data Equipment Expert

Duplication / Inspection / Sanitization

www.ureach.eu

Video

