

SP Series NVMe M.2 SSD and SATA Duplicator 1 to 1 (SP101)



Calificación: Sin calificación

[Haga una pregunta sobre este producto](#)

Descripción

PCIe / SATA M.2 Duplicator 1-1 (SP101)

- Speed transfers up to 9 GB per minute.
- Native support NVMe and SATA protocols.
- Supports 1-1 cross-interface copy.
- Supports hot swapping.
- Systems & files copy mode supports Windows (FAT16/32/64, NTFS), Linux (ext2/ext3/ext4) and Mac (HFS, HFS+, HFSX).
- Data Sanitization: Quick Erase, Full Erase, Secure Erase and DoD Erase.
- Supports M key and B+M key for M.2 SSDs; SATA devices.



- [Product Description](#)
- [Features](#)
- [Specification](#)
- [Comparison Chart](#)
- [Video](#)

Product Description

SP101 is a professional NVMe M.2 SSD and SATA duplicator. Native support NVMe and SATA protocols enables cross-signal and cross-interface duplication. It is designed specifically for small volume users and adopts high level FPGA closed platform design, which can eliminate the possibilities of virus infection completely.

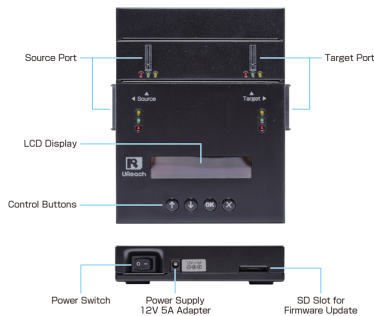
All U-Reach PCIe duplicator supports easy Plug and Copy operation mode. It completes duplication in 3 steps: power on, plug in, and press OK.

It provides four copy modes: quick smart copy, all partitions copy, percentage copy and whole copy that all meet different duplication task requirements. The quick copy mode copies data and skips blank area. NTFS, Linux (Ext2/Ext3/Ext4), FAT/FAT32/exFAT and Mac (HFS, HFS+, HFSX) formats can all be supported with quick copy mode.

In addition, the SP101 has modular-designed M.2 ports effectively reduce downtime and is cost-effective for long-term ownership.

Features

Hardware Overview



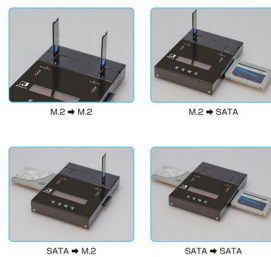
Supported Device



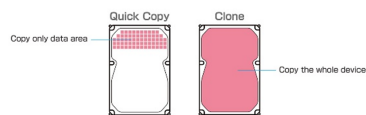
Easy Operation



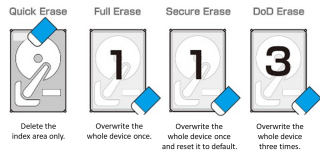
4 Copy Modes



Supports 2 Copy Methods

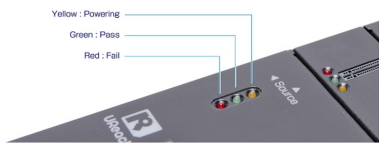


4 Erase Modes



Smart LED Indicators

3 color indicators shows real-time status.



Package




Specification

		Model Target
Specification	Maximum Transfer Speed	9.0GB/min. (150MB/sec.) *Actual performance is dependent on SSD transfer speeds*
	Capacity	Supports the latest market available capacity Designed support capability up-to 18TB+
	Operating Type	Stand-alone, FPGA-based operation (Non PC-based)
	Supported Languages	English, Japanese
Features	LCD Display LEDs	Backlit Monochrome LCD Display 3 LED Indicators per Port: Yellow (Power), Green (Pass), and Red (Fail)
	Control Panel	4 Push Buttons(?, ?, OK, ESC)
	Copy Modes	Quick Copy (Systems & Files Copy), All Partition Copy, Whole Device Copy, Percentage Copy
	Compare Function	Bit-by-bit data comparison
	Sanitization Modes	Quick Erase, Full Erase, Secure Erase and DoD Erase

SP101
1

Compati bilities	Compatible Devices	NGFF (M.2): 2230, 2242, 2260, 2280, PCI-e SSD (full and low profiles)
	Supported Formats	Quick Copy: FAT16/32/64, Windows (NTFS), Linux (Ext2/Ext3/Ext4), and Mac (HFS, HFS+,HFSX)
	Supported O/S	Whole Device Copy: All Formats, including proprietary formats All (Windows, Mac, Linux, and other stand-alone systems)
Hardwar e specifi cation	Power Supply	12V 5A Power Adaptor
	Working Temperature	5°C ~ 45°C (41°F ~ 113°F)
	Storage Temperature	-20°C ~85°C (-4°F ~ 185°F)
	Working Humidity	20% ~ 80%
	Storage Humidity	5% ~ 95%
	Product	18 x 15.6 x 3.4
	Dimensions (cm)	
	Weight (kg)	1.2
	Certifications	FCC, CE, RoHS

Comparison Chart



M.2 SSD Duplicator / Eraser Comparison Chart



Series / Model		PE	PE-H	PV	PX		SP	
					PX400	PX800	SP101	SP151
Ports		1-5; 1-10; 1-15; 1-20		1-11; 1-23	1-3	1-7	1-1	
Speed (GB/min)		24.0	60.0	12.0	9.0	12.0	9.0	24.0
Supported Protocol		NVMe, SATA (Auto Detect)						
Supported Interface	Direct	M.2		M.2	M.2		M.2 & SATA	
	Through Adapter	U.2, SATA, PCIe, MAC PCIe SSD, BGA SSD		PCIe, MAC PCIe SSD	PCIe, MAC PCIe SSD		MAC PCIe SSD, PCIe, mSATA, CFast	
Cross-Signal Copy		V		V	V		V	
Copy		V		V	V		V	
Full Erase		V		V	V		V	
Secure Erase		V		V	V		V	
DoD Erase		V		V	V		V	
Event Log Report		V						
SMART Info		V			Power Cycle, Power-on Hours, Temperature		V	
Image Management		V						

The Data Equipment Expert

Duplication / Inspection / Sanitization

www.ureach.eu

Video



